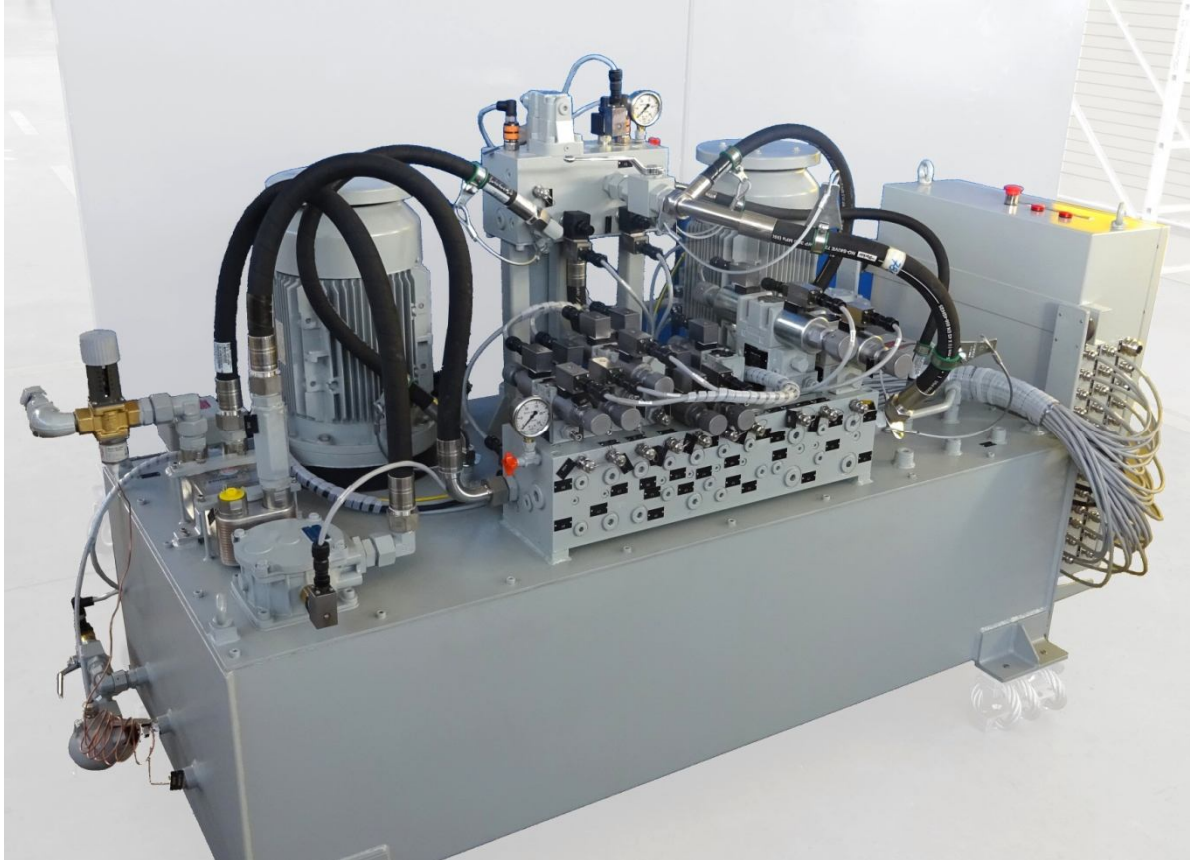


DEFENCE

Application: military marine vessel



SUPPLY: Winch control power unit for anti-submarine sonar system release

CHATACTERISTICS OF THE SYSTEM:

- HPU designed according to military standards
- Painting according to C5M cycle
- Installed electric power 22 Kw
- Pneumatic emergency stand-by unit
- Customized valves with MIL connectors and push&twist manual override
- MIL STD and RINA MIL rules certification

For more information on this application contact us at: applications@diplomatic.com