



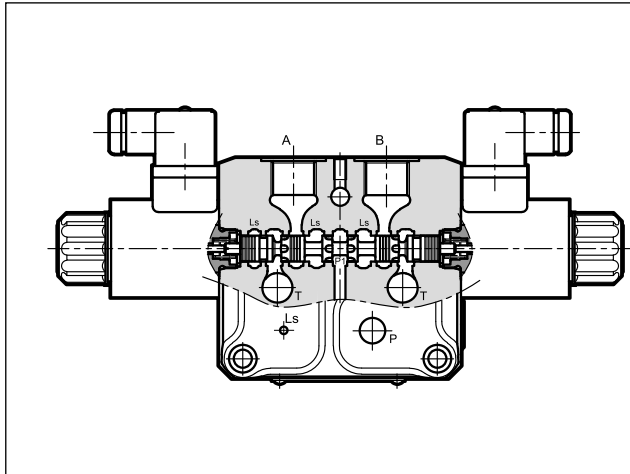
BLS6

PROPORTIONAL STACKABLE VALVE ASSEMBLY WITH LOAD SENSING

SERIES 21

p max 315 bar
Q max 120 l/min

OPERATING PRINCIPLE



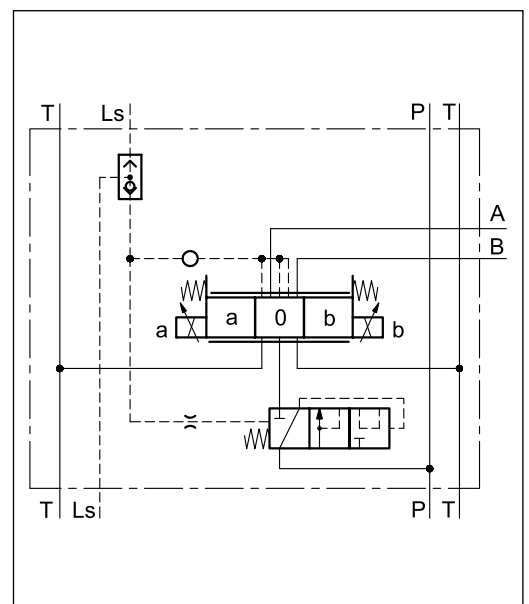
- The BLS6 is a stackable valve assembly. It can be assembled with up to 8 working sections (proportional and solenoid directional valves together).
- Each working section is equipped with a meter-in compensator that keeps the flow constant, regardless of load variations.
- Sections with pressure compensator are not influenced in any way by other operated functions, provided that sufficient pump capacity is available. In order to work correctly, the sum of the flows required at the same time must not exceed the 90% of the inlet flow.
- A and B working ports are threaded 1/2" BSPP. P and T ports of the inlet plate are 3/4" BSPP threaded.
- The lever override is available as option.

PERFORMANCES

(obtained with mineral oil with viscosity of 36 cSt at 50 °C)

Maximum operating pressure: - A, B and P ports - T ports	bar	315 20
Maximum flow rate: - A and B ports - P ports - T ports	l/min	45 100 120
Electrical characteristics	see point 4	
Ambient temperature range	°C	-20 / +60
Fluid temperature range	°C	-20 / +80
Fluid viscosity range	cSt	10 ÷ 400
Fluid contamination degree	According to ISO 4406:1999 class 18/16/13	
Recommended viscosity	cSt	25
Single body mass	kg	4,5
Surface treatment of body and plates	galvanic, zinc-nickel	

HYDRAULIC SYMBOL

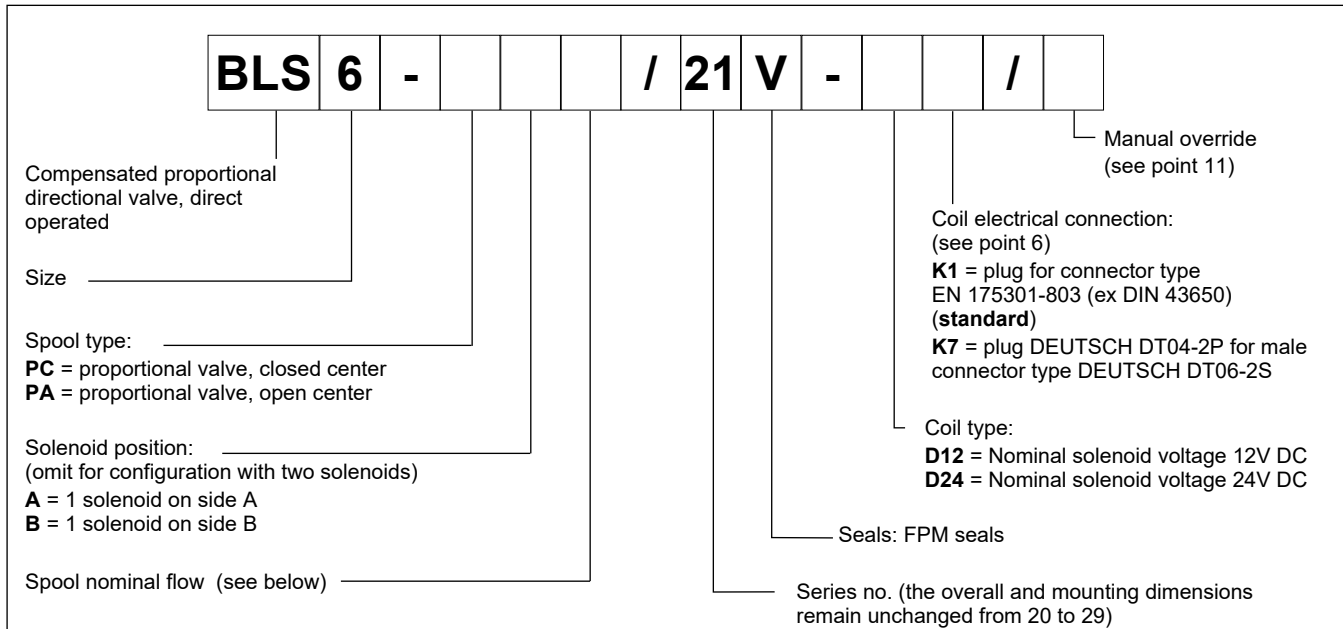


1 - IDENTIFICATION CODES FOR SPARE MODULES

The identification codes of all the loose components of the valve assembly are shown below. To order the assembled valve, please refer to the codes at points 9 and 10.

Different versions of the inlet section are available, for fixed pumps and for systems with a Load Sensing pump.

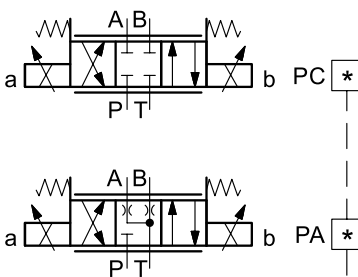
1.1 - Proportional working sections



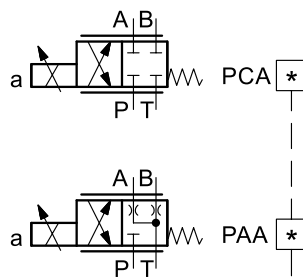
SPOOLS

Valve configuration depends on the combination of the following elements: number of solenoids, spool type, and nominal flow rate.

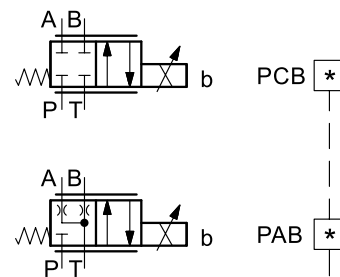
2 solenoids:
3 positions with spring centering



1 solenoid on side A:
2 positions (central + external) with spring return

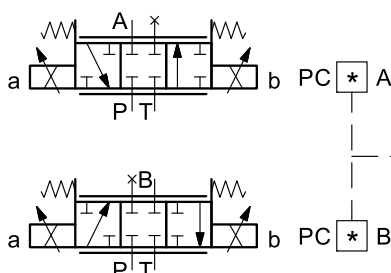


1 solenoid on side B:
2 positions (central + external) with spring return



SYMMETRICAL	
Q max	Δp
05/05	4
09/09	8
15/15	4
25/25	8
30/30	4
45/45	8

ASYMMETRICAL	
Q max	Δp
15/10	4
25/15	8
30/20	4
45/30	8



SINGLE FLOW	
Q max	Δp
30	4
45	8

1.2 - Solenoid working sections

Proportional directional valves can be used together with directional solenoid valves in the same assembly. To order on-off modules, enter the following codes in the identification code, under 'spool type':

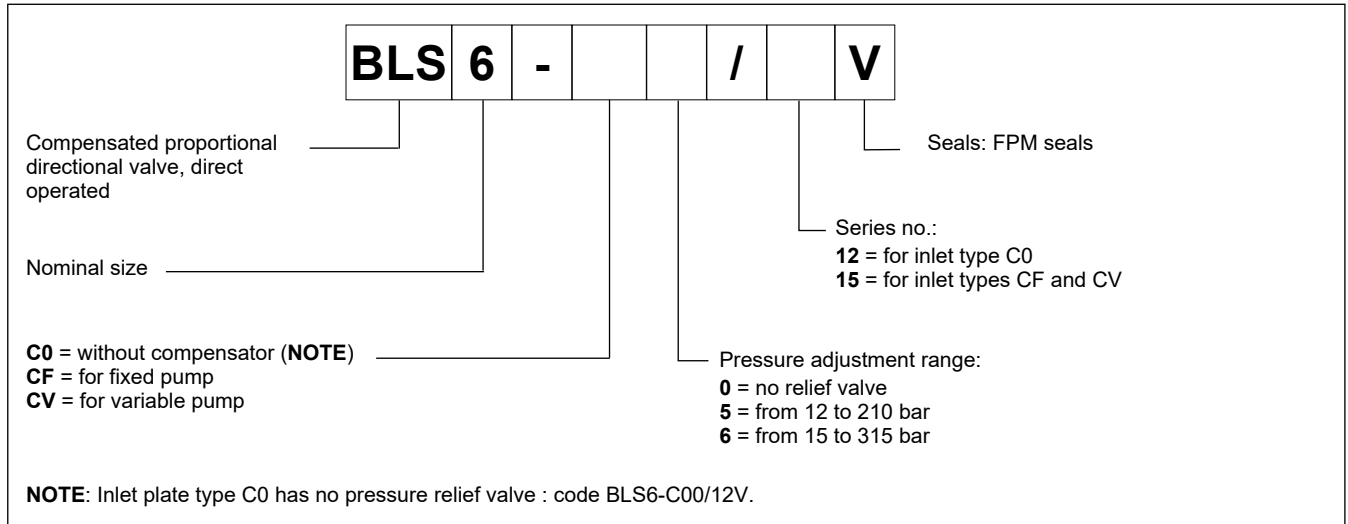
SC = solenoid valve, closed centre

SA = solenoid valve, open centre

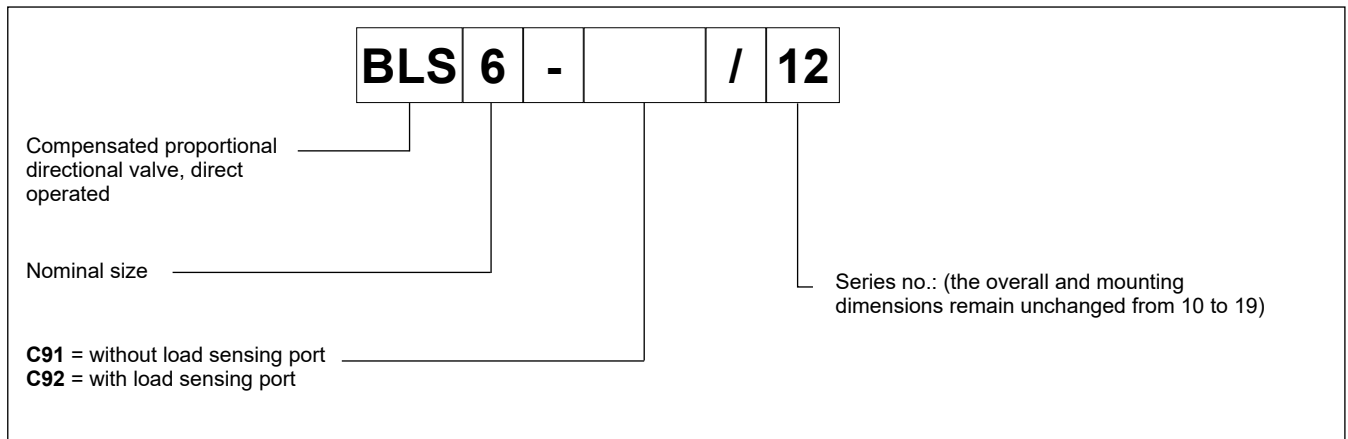
In addition to the flow rates already indicated, two spools for high flow rates are also available: SC60/60 and SA60/60.

1.3 - Inlet plates

Inlet plates for fixed pumps and for variable pumps with load sensing are available.



1.4 - End plates



2 - HYDRAULIC FLUIDS

Use mineral oil-based hydraulic fluids HL or HM type, according to ISO 6743-4 or fluids HFDR type. For the use of other kinds of fluid such as HFA, HFB, HFC, please consult our technical department. Using fluids at temperatures higher than 80 °C causes a faster degradation of the fluid and of the seals characteristics.

The fluid must be preserved in its physical and chemical characteristics.

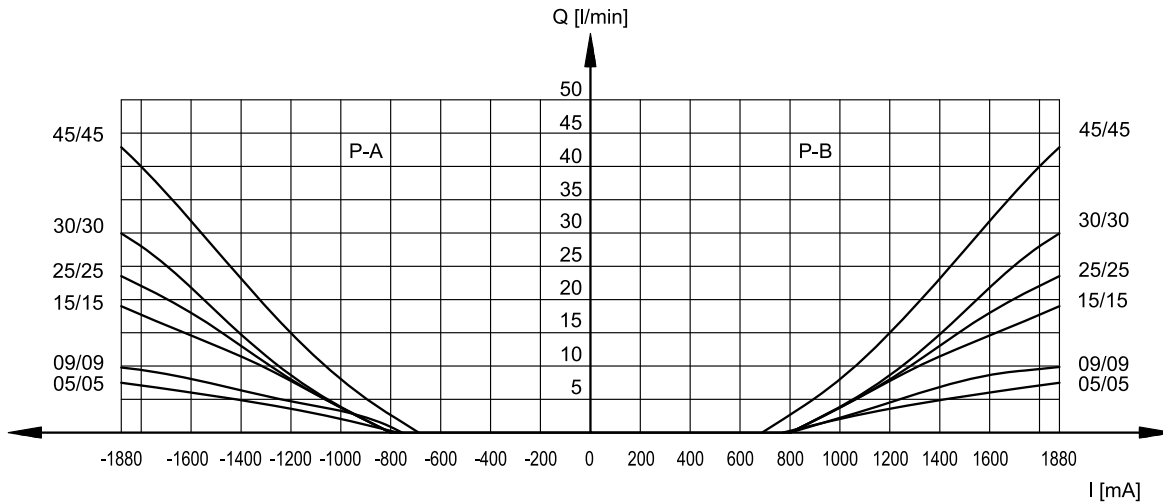


3 - CHARACTERISTIC CURVES

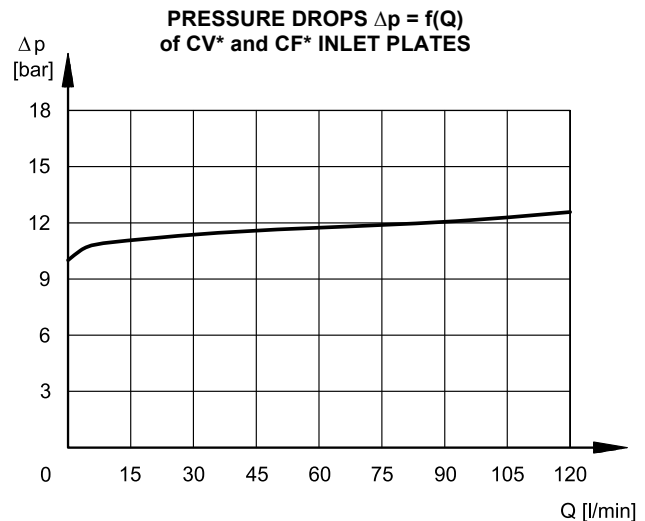
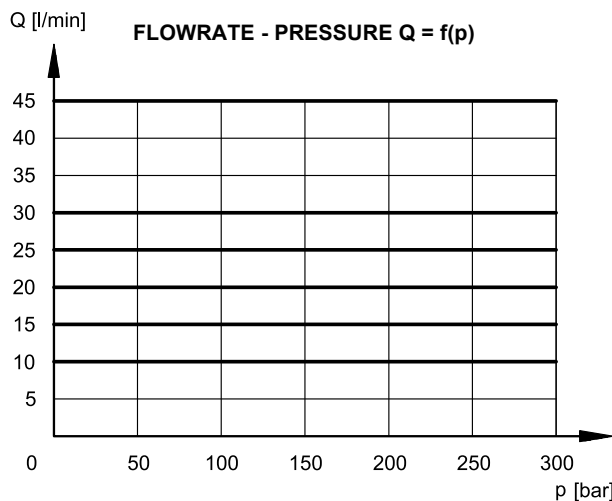
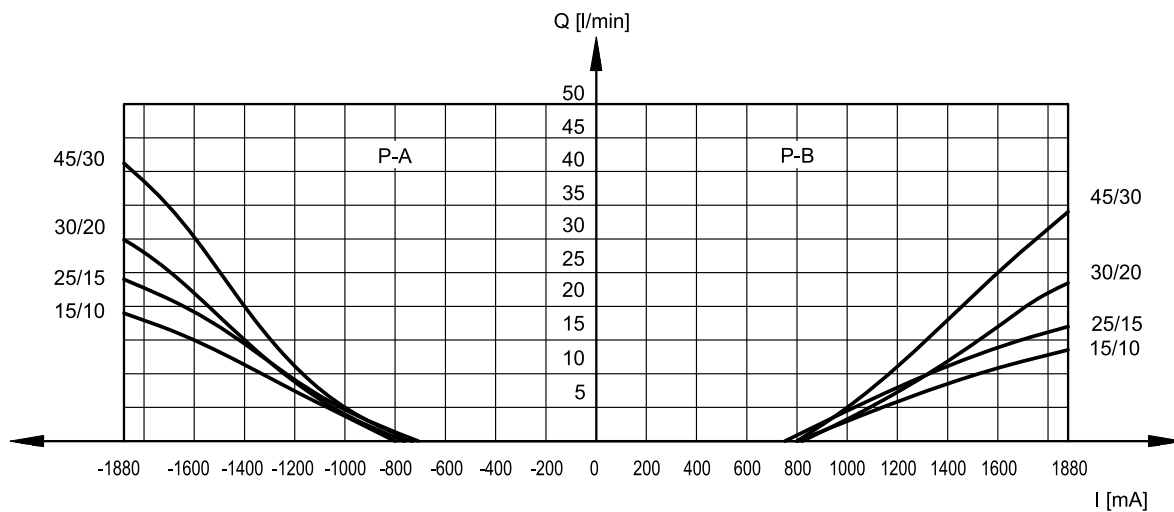
(values obtained with viscosity 36 cSt at 50 °C)

Typical constant flow rate obtained through the embedded compensator, with 12 V supply voltage (for D24 version the maximum current is 860 mA), measured for the various spool types available.

**PRESSURE DROPS Δp -Q OF PROPORTIONAL WORKING SECTIONS
SYMMETRICAL FLOWS - PC AND PA SPOOLS**



ASYMMETRICAL FLOWS - PC and PA SPOOLS



4 - ELECTRICAL CHARACTERISTICS

Proportional solenoid

The proportional solenoid is made of two parts: tube and coil.

The tube, screwed to the valve body, contains the armature which is designed to maintain friction to a minimum thereby reducing hysteresis.

The coil is mounted on the tube secured by means of a lock nut.

It can be rotated through 360° depending on installation clearances.

NOMINAL VOLTAGE	V DC	12	24
RESISTANCE (at 20 °C)	ohm	4.4	18.6
NOMINAL CURRENT	A	1.88	0.86
DUTY CYCLE		100%	
ELECTROMAGNETIC COMPATIBILITY (EMC)	According to 2014/30/EU		
CLASS OF PROTECTION Coil insulation (VDE 0580) Impregnation	class H class F		

Protection from atmospheric agents IEC 60529

The IP protection degree is guaranteed only with both valve and connectors of an equivalent IP degree correctly connected and installed.

electric connection	electric connection protection	whole valve protection
K1 EN 175301-803 (ex DIN 43650)	IP65	IP65
K7 DEUTSCH DT04 male	IP65/67	

5 - STEP RESPONSE

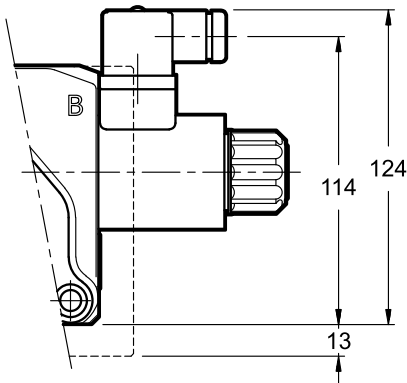
(Obtained with mineral oil with viscosity of 36 cSt at 50°C with electronic control card)

Step response is the time (delay) taken for the valve to reach 90% of the set position value following a step change of the reference signal.

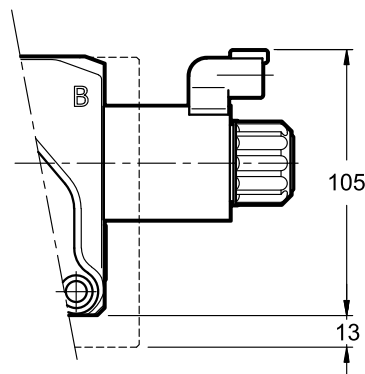
Reference signal step	0 → 100%	100 → 0%
STEP RESPONSE [ms]		
BLS6	50	40

6 - ELECTRICAL CONNECTIONS

connection for EN 175301-803 (ex DIN 43650) connector code **K1 (standard)**



connection for DEUTSCH DT04-2P connector type code **K7**

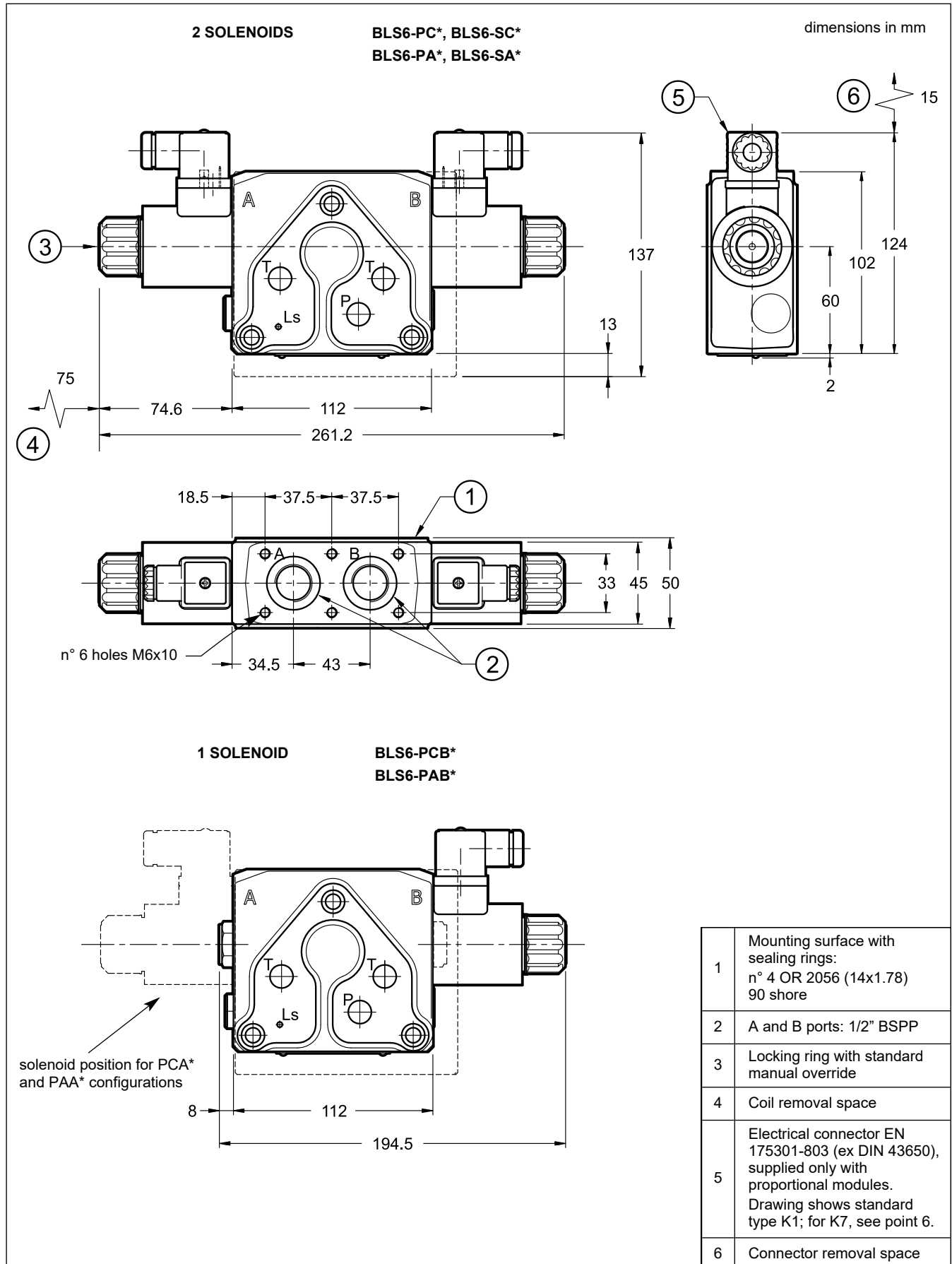


7 - ELECTRICAL CONNECTORS

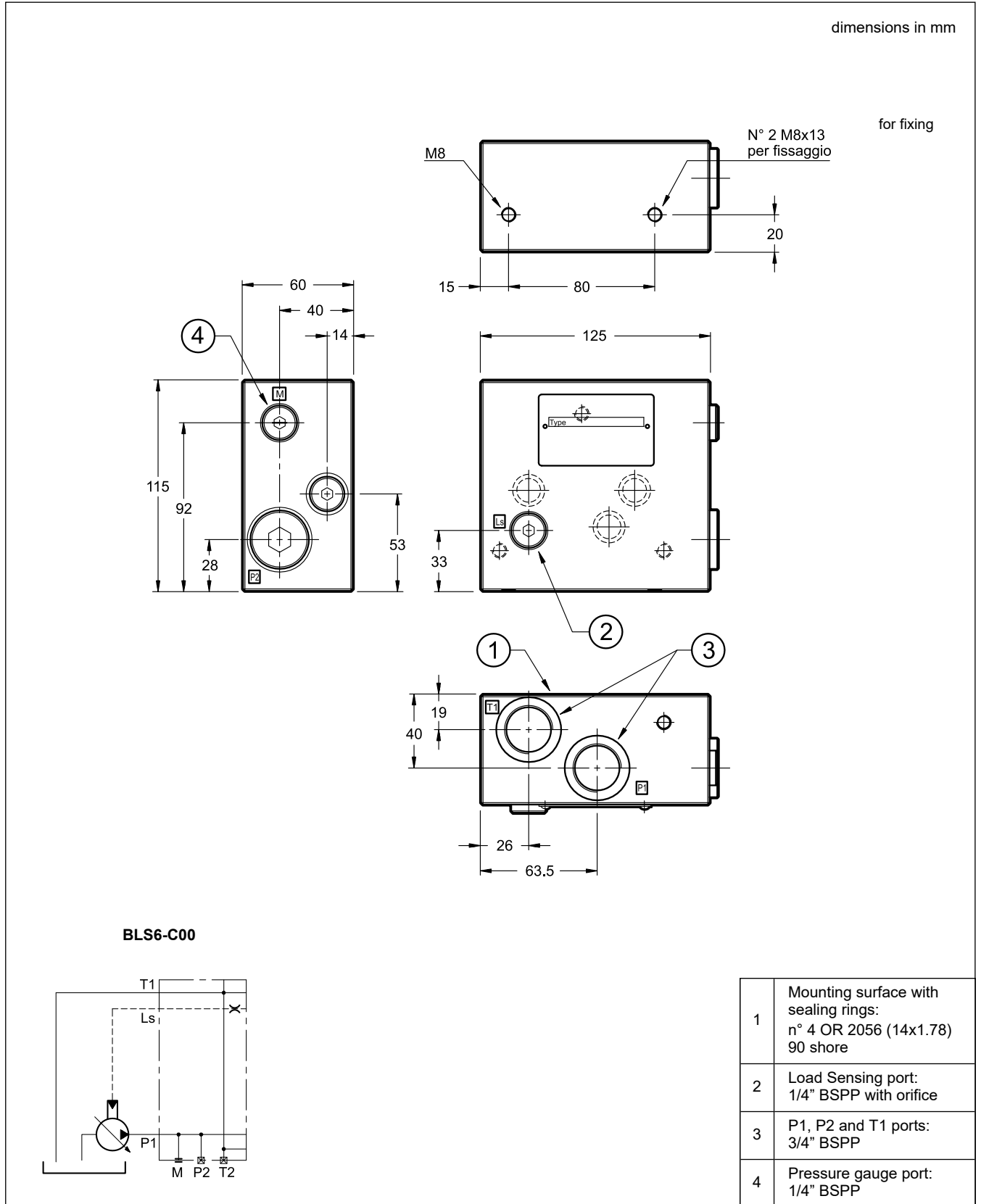
Solenoid working sections are supplied without connectors. Connectors for solenoid valves with K1 electrical connection EN 175301-803 (ex DIN 43650) can be ordered separately: see catalogue 49 000.

8 - OVERALL AND MOUNTING DIMENSIONS

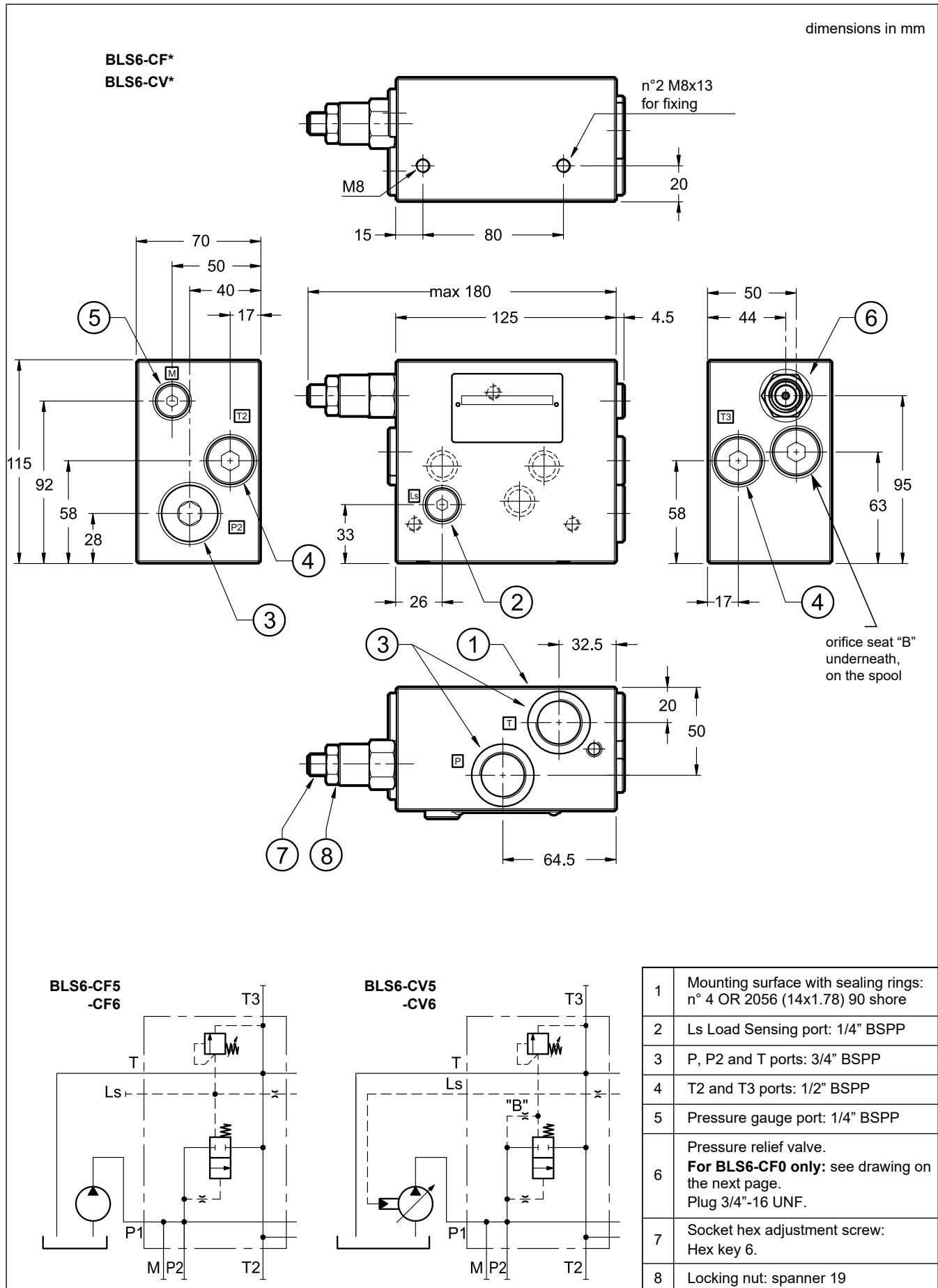
8.1 - Working sections

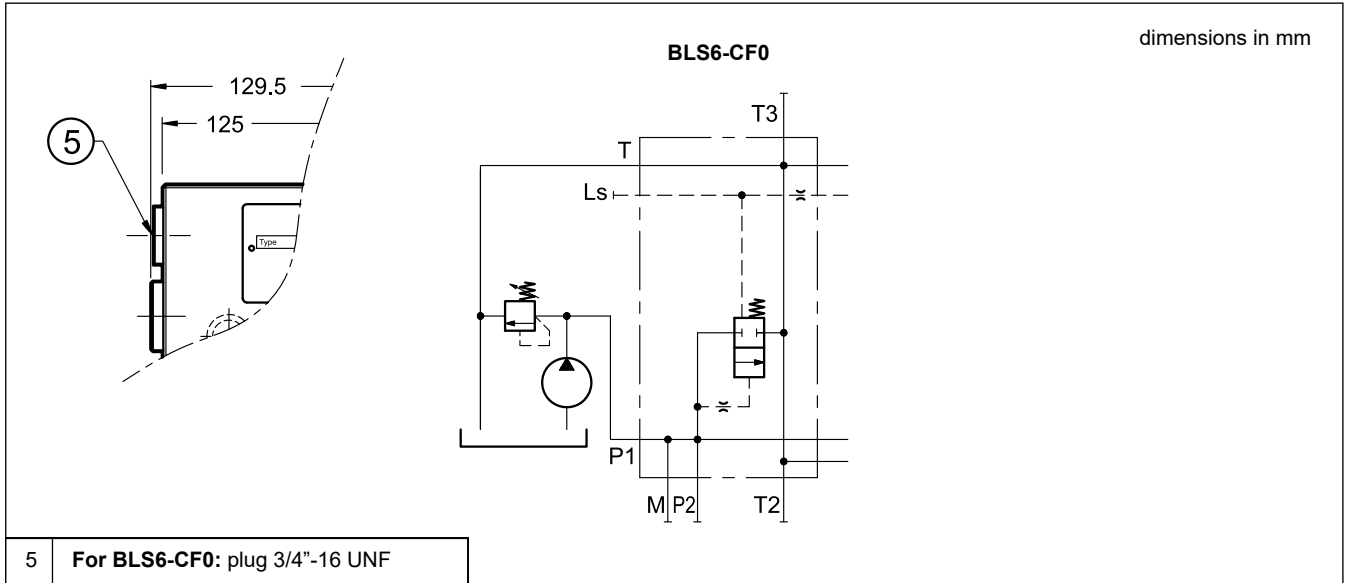


8.2 - Inlet plate without compensator

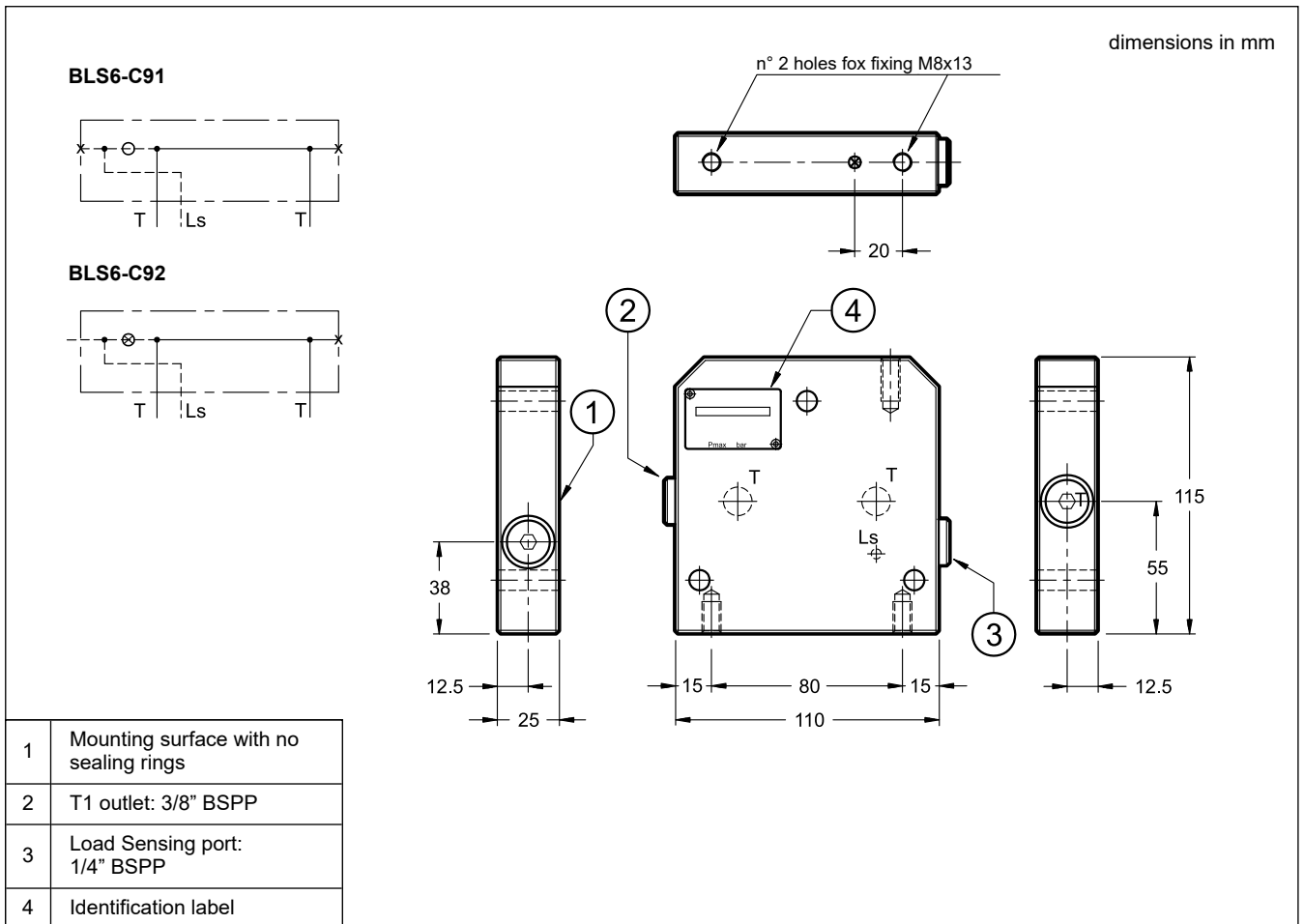


8.2 - Inlet plates with compensator, for fixed pump and for variable pump





8.3 - End plates





9 - IDENTIFICATION CODE OF THE ASSEMBLED VALVE

BLS6	-		-		-		-		/	21	V	-		/	
-------------	---	--	---	--	---	--	---	--	---	-----------	---	---	--	---	--

Compensated proportional directional valve, direct operated

Inlet plate: _____
C0 = without compensator (**NOTE**)
CF = for fixed pump
CV = for variable pump

Pressure adjustment range: _____
0 = no pressure relief valve
5 = from 12 to 210 bar
6 = from 15 to 315 bar

Working sections: _____
Choose the spool type and the rated flow as in code at point 1.1.
Repeat for each working section: min 2, max 8 sections.

End plate: _____
C91 = without load sensing port
C92 = with load sensing port

NOTE: The C0 version is available without the pressure relief valve only, with code BLS6-C00/12V.

Code example:
BLS6-C00-PC30/30-PC30/30-C92/21V-D24K1: assembled valve made of inlet plate without compensator; 2 proportional working sections, closed center spool, flow rate 30/30; end plate with load sensing port; FPM seals, 24V DC coils and K1 connection.
BLS6-CF5-PA45/30-PA45/30-PC30/30-PAB15/15-C91/21V-D12K1: assembled valve made of inlet plate for fixed pump (max pressure 210 bar); 2 proportional working sections, open center spool, flow rate 45/30; 1 proportional working section, closed center spool, flow rate 30/30 and 1 proportional working section with one solenoid only on side B, open center spool, flow rate 15/15; end plate without load sensing port; FPM seals; 12V DC coils with K1 connection.

NOTE: For best performance, it is recommended to place the spool with the highest flow rate first, the others to follow, in descending order.

Option:
Manual override **on each working section** (see point 11)

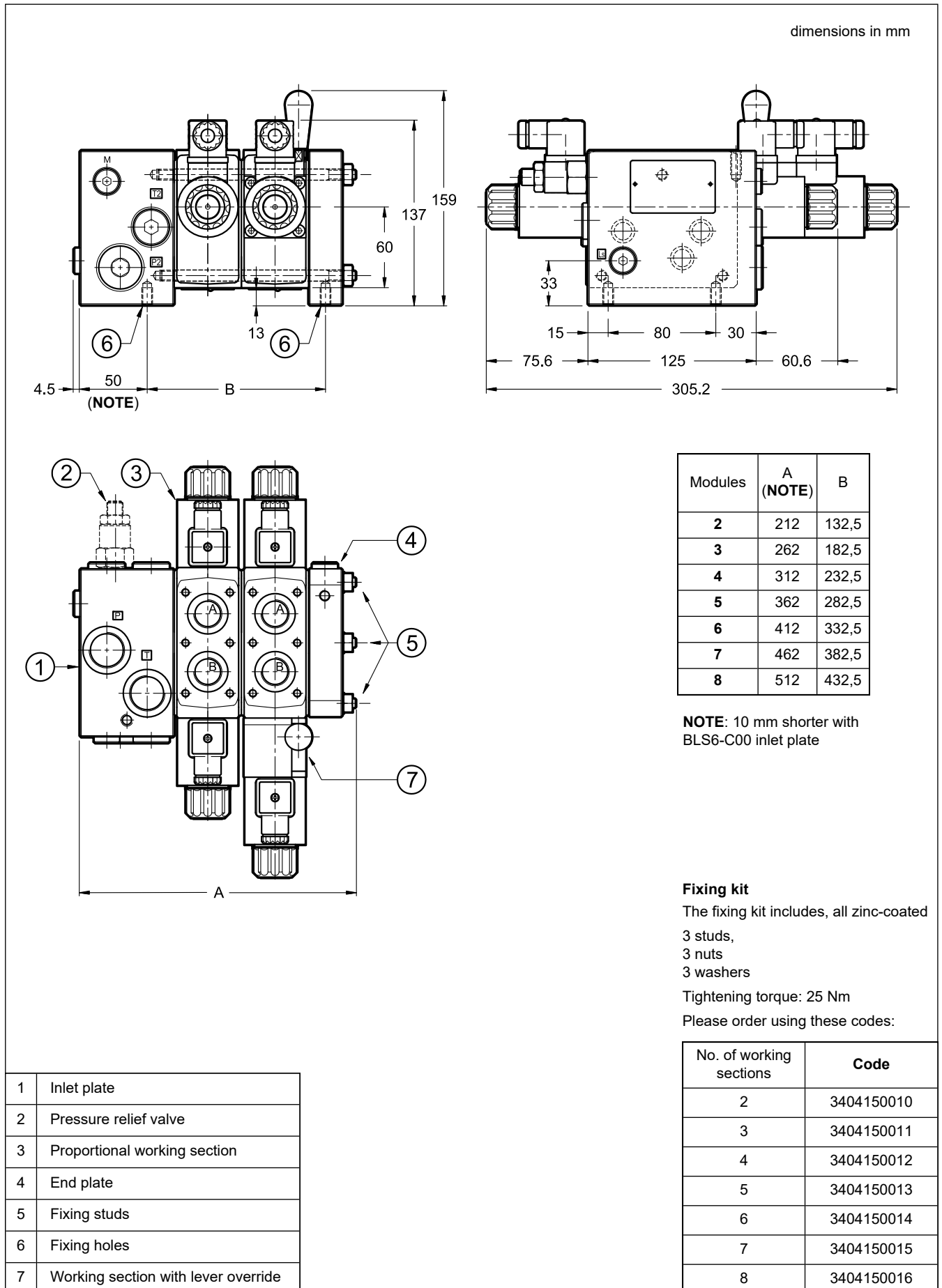
Coil electrical connection:
(see point 6)
K1 = plug for connector type EN 175301-803 (ex DIN 43650) (**standard**)
K7 = plug DEUTSCH DT04-2P for male connector type DEUTSCH DT06-2S

Coil type:
D12 = Nominal solenoid voltage 12V DC
D24 = Nominal solenoid voltage 24V DC

Seals: FPM seals

Series no.: (the overall and mounting dimensions remain unchanged from 20 to 29)

10 - INSTALLATION AND OVERALL DIMENSIONS OF THE ASSEMBLED VALVE

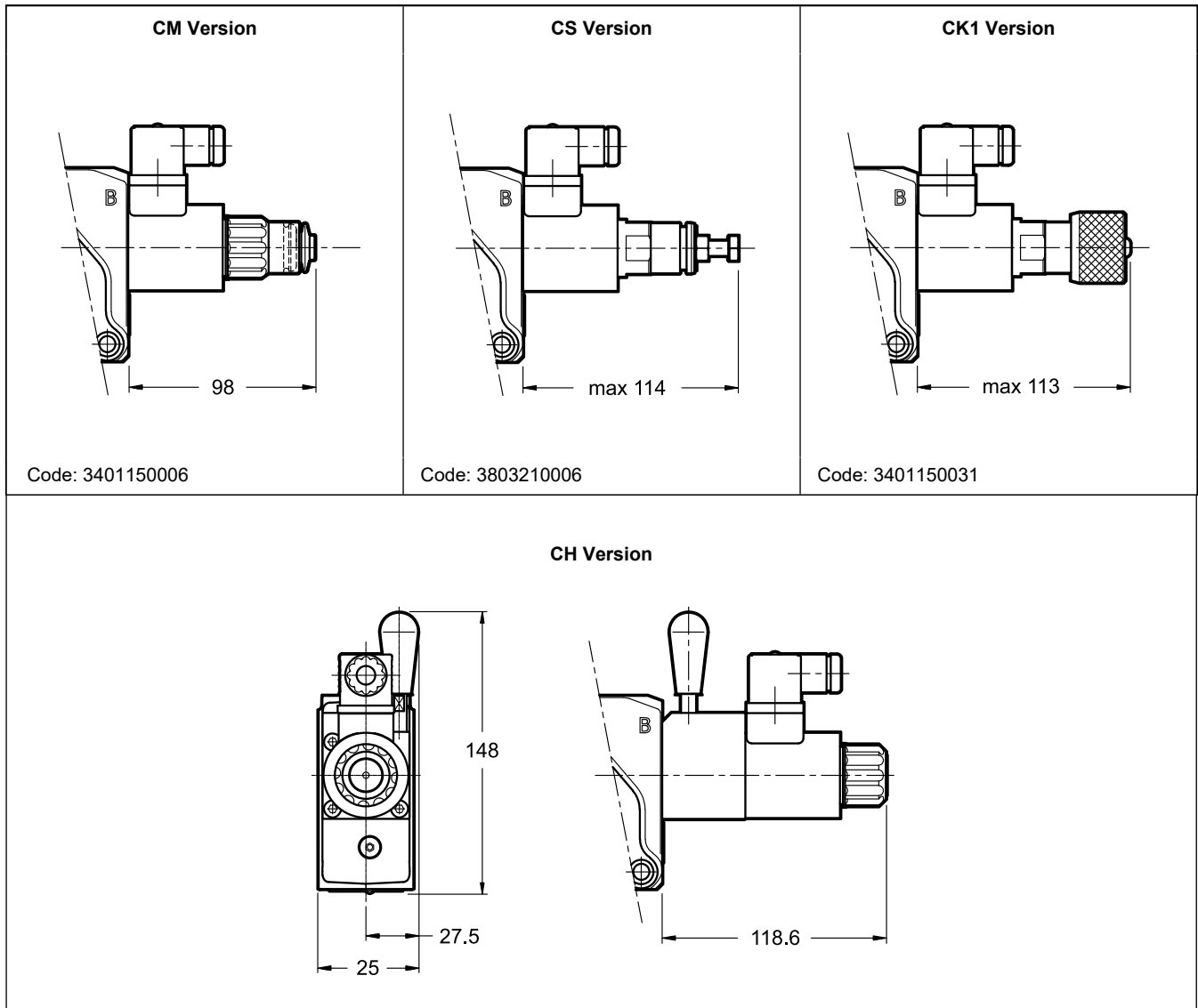


11 - MANUAL OVERRIDE

The standard working section has solenoids whose pin for the manual operation is integrated in the tube. The operation of this device must be done with a suitable tool, minding not to damage the sliding surface.

The following manual overrides are available:

- **CM** version, boot protected.
- **CS** version, with metal ring nut provided with a M8 screw and a blocking locknut.
- **CK1** version, turning knob override.
- **CH** lever manual override.



12 - ELECTRONIC CONTROL UNITS

One solenoid

EDC-111	for solenoid 24V DC	plug version	see cat. 89 120
EDC-141	for solenoid 12V DC		
EDM-M111	for solenoid 24V DC	DIN EN 50022 rail mounting	see cat. 89 252
EDM-M141	for solenoid 12V DC		

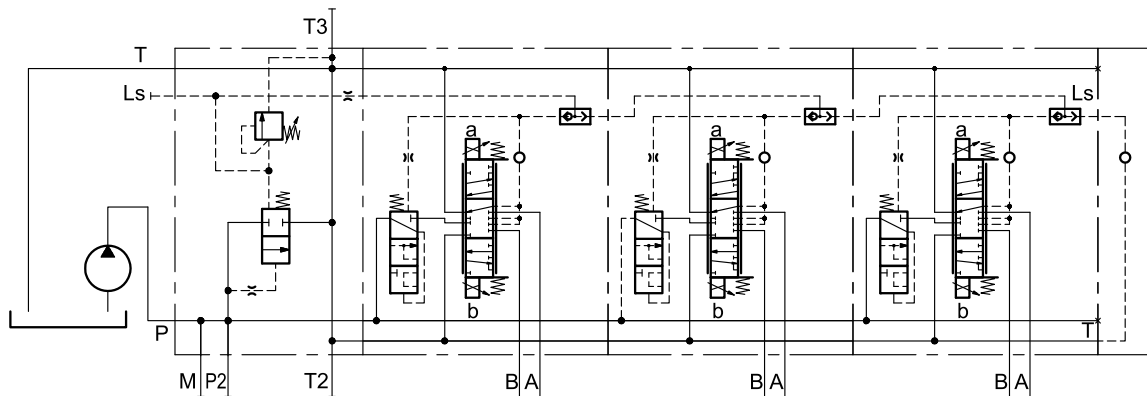
These cards can drive only a working section at once.
Every working section to be driven by electronic card must have its own.

Two solenoids

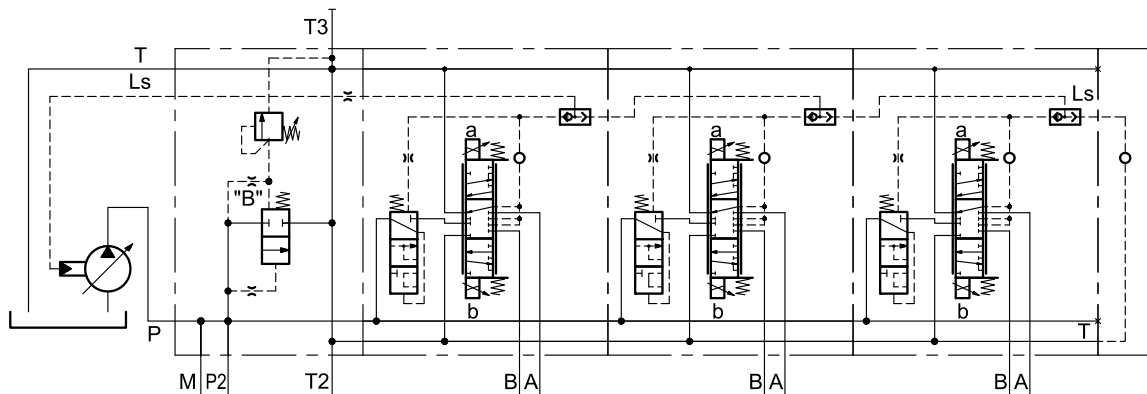
EDM-M211	for solenoid 24V DC	rail mounting DIN EN 50022	see cat. 89 252
EDM-M241	for solenoid 12V DC		

13 - APPLICATION EXAMPLES

BLS6 assembly with pressure relief valve, for fixed displacement pumps.



BLS6 assembly for systems with LS pump.
Equipped with a direct operated pressure relief valve to protect the pump.



Circuit made of two BLS6 assemblies connected in parallel to the fixed pump and in series to the LS line.

